

# Easypeasy

Sustainability Credentials  
December 2025



# Contents

1. Our Commitment	5
2. Thinking Circularity	7
3. Thinking Environment	9
4. Thinking People	19



# 1. Our Commitment.

Our commitment to sustainability isn't driven by trends, it is guided by our belief that doing the right thing is the only way forward. Since 2010, when we first achieved ISO 14001 certification for Environmental Management Systems, sustainability has been part of who we are.

For more than 15 years, we've maintained this certification, giving us a clearer framework to measure, manage and continually improve our environmental performance. This commitment also shapes the way we design. We think about the whole lifecycle - creating products that are fit for purpose, designed for disassembly, and able to be returned at end-of-life through our take-back program.

Sustainability goes beyond products and processes. At Thinking Works, we put people first, fostering a safe, healthy workplace for our team and working with our suppliers to promote responsible practices across our supply chain. We have been proud participants of the United Nations Global Compact since 2016, and we voluntarily report under the Commonwealth Modern Slavery Act 2018. Our Modern Slavery Statement is published on the official register and available to [read here](#).

# 2. Thinking Circularity.



## Steel Frame

At the end of its service life, the steel frame of Easypeasy can be re-powder coated and refurbished for continued use where suitable or fully recycled to recover the material for new products.



## DEFY rHDPE Backrest & Seat

Our recycled high-density polyethylene (rHDPE) backrest and seat is made from 95-100% post-consumer and post-industrial waste. After use, the material can be repolished for renewed appearance or fully recycled into a new HDPE product. This ensures that material stays in circulation, minimises waste, and supports an environmentally responsible approach to furniture design.



## FSC Certified Backrest & Seat

Our Forest Stewardship Council (FSC) certified timber backrest and seat can be reused or refinished where possible or recycled into new wood products at the end of its service life, keeping material in circulation and supporting sustainable forest management.

At Thinking Works, our products are built to last and built to return, refurbish or recycle. Designed with durability and end-of-life in mind, every piece contributes to a circular economy. Crafted from high-quality materials selected for both performance and their ability to be disassembled and reprocessed at end-of-life, our products help keep valuable resources in circulation and out of landfill.

Through our take-back program, we actively recover all Thinking Works products, ensuring they are responsibly reused, where possible, or recycled. This commitment to circularity empowers clients to make furniture choices that go beyond functionality - supporting waste reduction, resource efficiency, and responsible environmental management.



# 3. Thinking Environment.

Our products are designed and manufactured with environmental responsibility front of mind. From considered material selection through to manufacturing and use, we assess environmental impact at every stage. We prioritise materials that support durability, resource efficiency, and long product life - reducing unnecessary replacement and waste over time.

By embedding environmental thinking into both design and operations, we go beyond meeting sustainability standards to deliver practical solutions that help our clients make responsible, informed choices with lasting environmental benefit.

# 3.1. Steel Frame.

## Durable Design

Our steel frames are designed to withstand the demands of high-use commercial environments. Their robust construction reduces the need for premature replacement, extending the overall lifespan of the product and ensuring long-term value for clients.

## Modular and Repairable

Designed with interchangeability in mind, individual components can be easily replaced if damaged. This approach minimises waste, prevents unnecessary disposal of the entire frame, and supports a circular lifecycle.

## Re-powder coated and Refurbishable

At the end of its service life, the steel frame can be re-powder coated and refurbished for continued use where suitable. When refurbishment is no longer viable, the steel can be fully recycled into new products, keeping valuable materials in circulation and reducing environmental impact.

**Designed to be...**

**Durable.**

**Modular.**

**Reconfigured.**

**Recoated.**

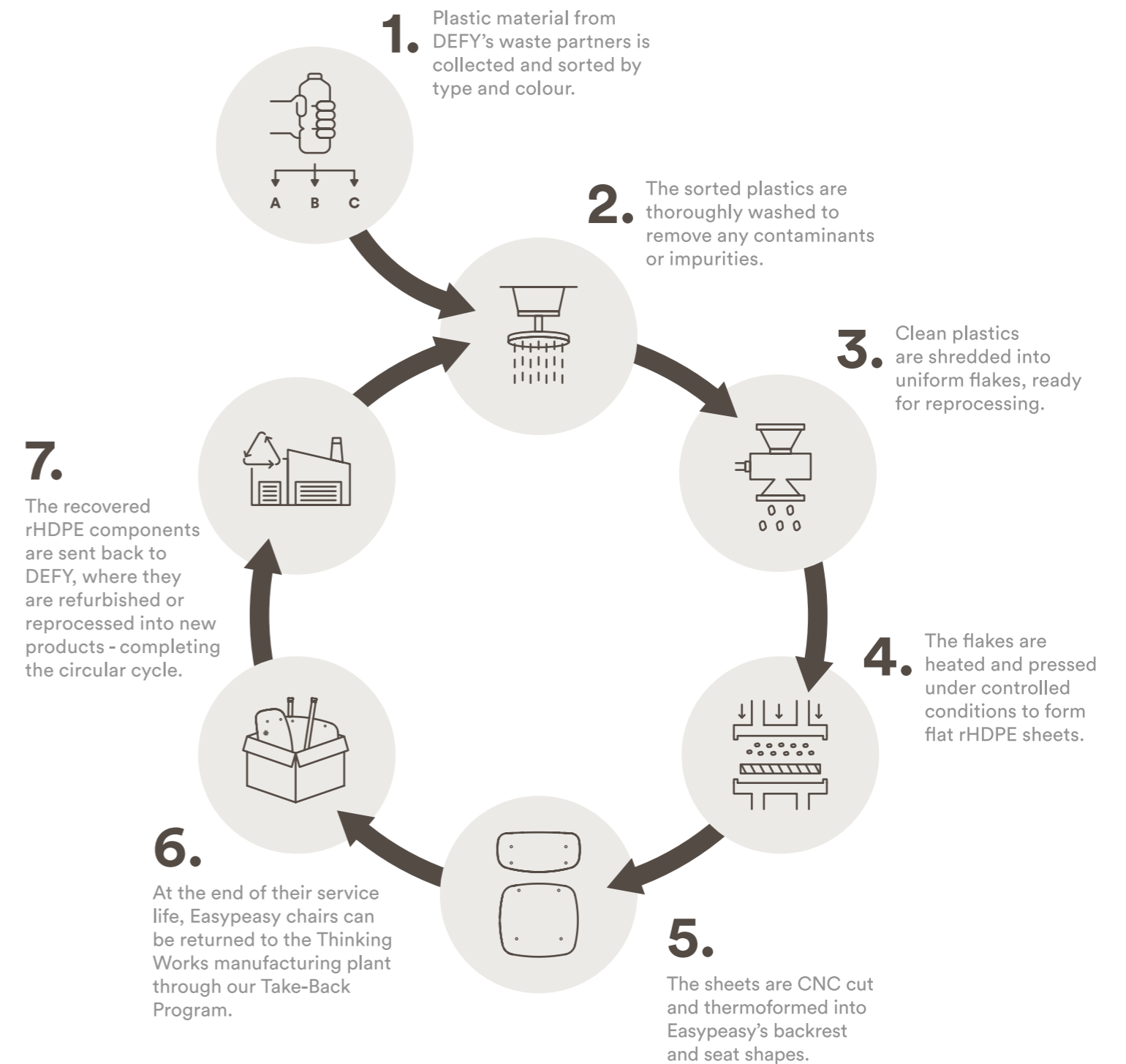
**Refurbished.**



In Australia, around 30,000 tonnes of commercial furniture waste is generated each year, with an estimated 95% ending up in landfill.<sup>1</sup>

Our rHDPE helps change that.

## 3.2. DEFY rHDPE Backrest & Seat.



<sup>1</sup> Australian Government Department of Climate Change, Energy, the Environment and Water (DCCEEW), *Designing out waste for commercial furniture and furnishings* – Furniture 360, Australian Government, Canberra, 2023.



#### Collaboration and Innovation

In partnership with DEFY, post-consumer and post-industrial plastic waste is transformed into vibrant, functional rHDPE products. This approach reduces demand for virgin materials while giving discarded plastics a new life.

#### Resource Recovery

Each backrest and seat, weighing 2.81kg, is made from 95 – 100% rHDPE. By using post-consumer and post-industrial plastic waste, our rHDPE backrest and seat helps recover valuable materials.

#### Locally Sourced

Our rHDPE is sourced from within a 30 km radius of Greater Sydney, helping to reduce transport-related emissions and support local suppliers. Working with nearby partners means our products are not only made locally but can also be easily returned for refurbishment or recycling through the same supply network, further minimising environmental impact.

#### Refinishable, Reusable, Recyclable

In Australia, around 30,000 tonnes of commercial furniture waste is generated each year, with an estimated 95% ending up in landfill<sup>1</sup>. Our rHDPE helps change that - it can be refinished and reused to extend the product's lifespan and fully recycled into new products at the end of its service life, keeping valuable materials in circulation and out of landfill.

## Embodied carbon

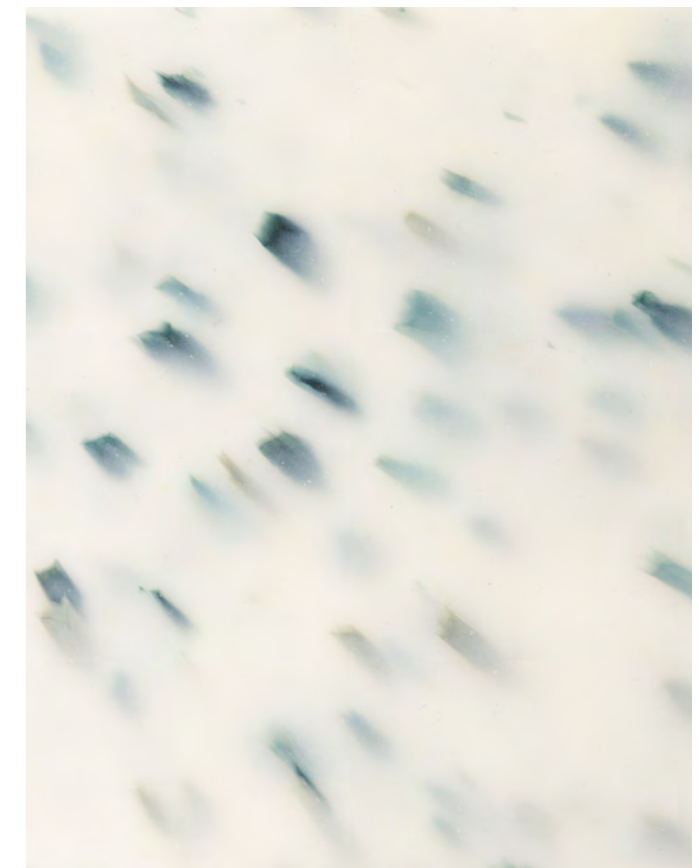
# 18.86 kg CO<sub>2</sub>-e per chair.

#### Embodied Carbon Assessment

Our DEFY rHDPE Easypeasy Chair has undergone an independent cradle-to-gate (A1-A3) embodied carbon assessment by FF&3, and reviewed by Slattery, a Green Building Council of Australia and Property Council of Australia-endorsed carbon advisory. Using recognised Australian and international databases, the assessment determined an embodied carbon of 18.86 kg CO<sub>2</sub>-e\* per chair.

This assessment reflects our commitment to responsible design and transparency and helps our clients understand a product's environmental impact to make informed choices.

\*Values exclude reductions for biogenic values.



# 3.3. FSC Certified Backrest & Seat

## Responsibly Sourced

Our plywood is FSC certified, guaranteeing it is sourced from responsibly managed forests that prioritises biological diversity, regeneration and ethical forestry practices. This ensures traceable, environmentally responsible sourcing.

## Reusable and Refinishable

The plywood can be refurbished and/or reused where possible, extending the product's service life, reducing waste, and supporting a circular approach to materials.

## Recyclable

Plywood that can no longer be reused will be recycled into new wood products, maintaining material value and keeping resources in circulation, reducing the demand for virgin timber.

## Embodied carbon

# 12.01 kg CO<sub>2</sub>-e per chair.

### Embodied Carbon Assessment

Our Plywood Easypeasy Chair has undergone an independent cradle-to-gate (A1-A3) embodied carbon assessment by FF&3, reviewed by Slattery, a Green Building Council of Australia and Property Council of Australia-endorsed carbon advisory. Using recognised Australian and international databases, the assessment determined an embodied carbon of 12.01 kg CO<sub>2</sub>-e\* per chair.

This assessment reflects our commitment to responsible design and transparency and helps our clients understand a product's environmental impact to make informed choices.

\*Values exclude reductions for biogenic values.





# 4. Thinking People.

At Thinking Works, we design and perform final assembly of all our products in Australia, supporting local jobs and communities. We strive to provide a healthy and safe work environment for all employees, while also working closely with our suppliers to understand their labour practices and mitigate risks of modern slavery or exploitative work.

Thinking Works has developed due diligence systems to address human rights and modern slavery, and we have participated in the United Nations Global Compact since 2016. As part of this commitment, we voluntarily report under the Commonwealth Modern Slavery Act 2018, demonstrating our ongoing dedication to ethical business practices and responsible supply chains.

Learn more about our ethical and human rights commitments in our [Modern Slavery Statement](#).

### **Easypeasy**

If you would like a sample set of any of our finishes, please contact us on the details below.

Due to our policy of continuous product development, specifications and finishes may change without prior notice.

### **Sustainability**

Our commitment to sustainability isn't driven by trends, it is guided by our belief that doing the right thing is the only way forward. From product certifications to responsible sourcing, we are committed to taking meaningful action across every part of our business. To learn more about our sustainability journey, visit the Thinking Works website or contact our Sustainability & ESG Manager using the details below.

### **Thinking Works**

© Copyright 2025  
All Rights Reserved

### **Head Office**

Warehouse 2B/M5 Industry Park  
1 Moorebank Ave, Moorebank  
New South Wales 2170 Australia  
P: +61 (0)2 9726 7177  
F: +61 (0)2 9726 7188  
sales@thinkingw.com

### **Australia Enquiries:**

sales@thinkingw.com

### **New Zealand Enquiries:**

sales@thinkingw.com

### **United Kingdom and Europe Enquiries:**

exports@thinkingw.com

### **Middle East Enquiries**

exports@thinkingw.com

### **Asia Enquiries:**

exports@thinkingw.com

### **United States of America Enquiries:**

exports@thinkingw.com

[www.thinkingw.com](http://www.thinkingw.com)

# Furniture for the Curious